

PLAT OF JEFFERSON CORNERS

AT HERITAGE RIDGE - A P.U.D. GOMEZ GRANT MARTIN COUNTY, FLORIDA

I, MARSHA STILLER, CLERK OF THE CIRCUIT COURT OF MARTIN COUNTY, FLORIDA, HEREBY CERTIFY THAT THIS PLAT WAS FILED FOR RECORD IN PLAT BOOK 12, PAGE 03, MARTIN COUNTY, FLORIDA, PUBLIC RECORDS, THIS DAY OF , 1990.

MARSHA STILLER,
CLERK CIRCUIT COURT
MARTIN COUNTY, FLORIDA.

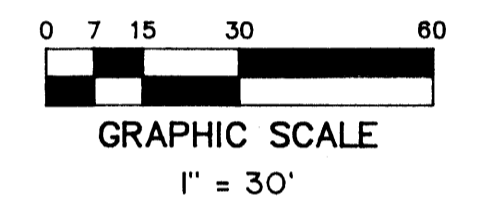
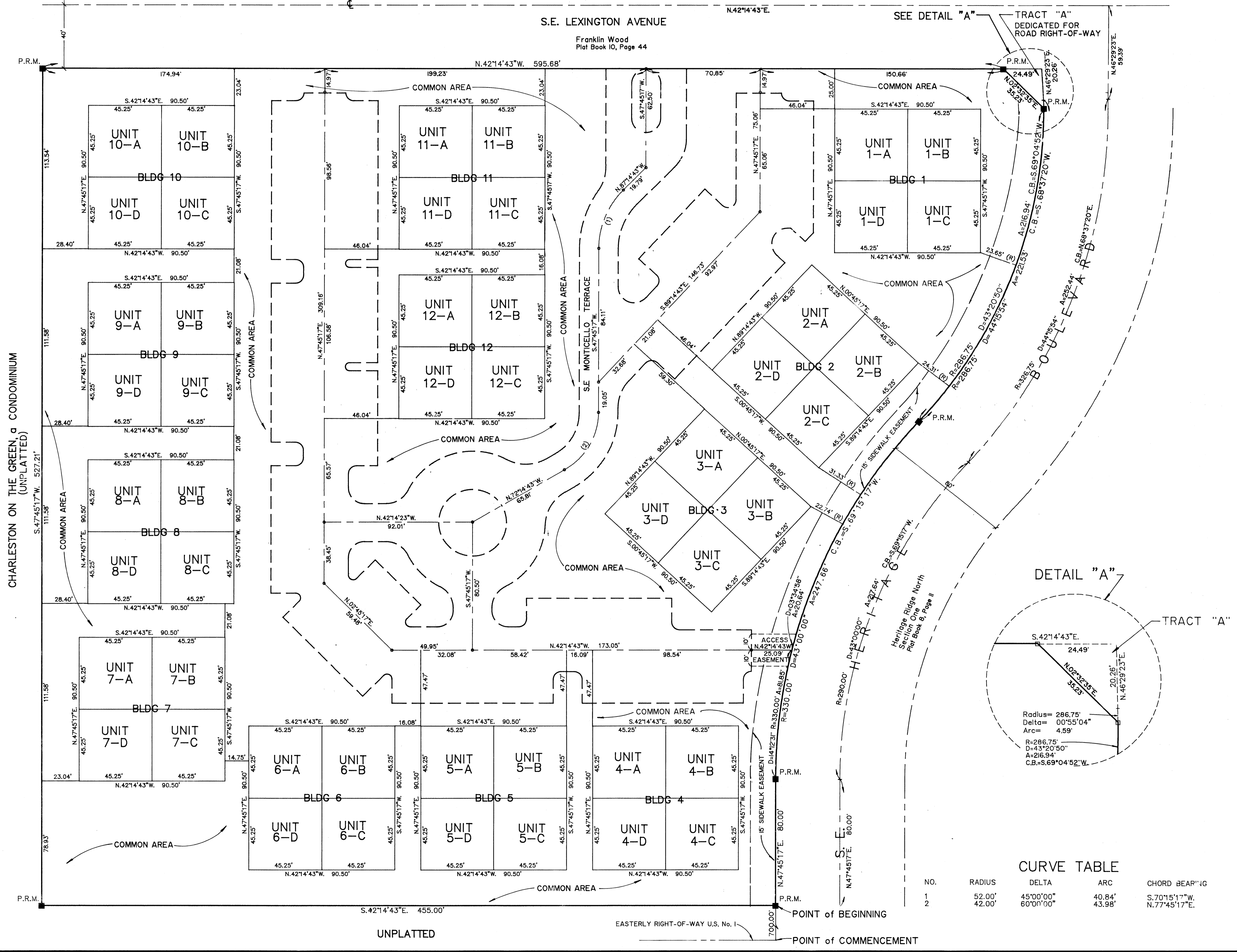
BY: _____
DEPUTY CLERK

FILE NO. _____

(CIRCUIT COURT SEAL)

SUBDIVISION PARCEL CONTROL NO.
34-38-42-092-000-000-0

JUNE 1990
2 OF 2



NO.	RADIUS	DELTA	ARC	CHORD BEAR'G
1	52.00'	45°00'00"	40.84'	S.70°15'17"W.
2	42.00'	60°00'00"	43.98'	N.77°45'17"E.

G O Y
INCORPORATED

CIVIL ENGINEERS / LAND SURVEYORS

PALM CITY - P.O. BOX 1469 34990 - 407 286-8063
FT. PIERCE - 4980 S. 25th STREET 34982 - 407 466-9500